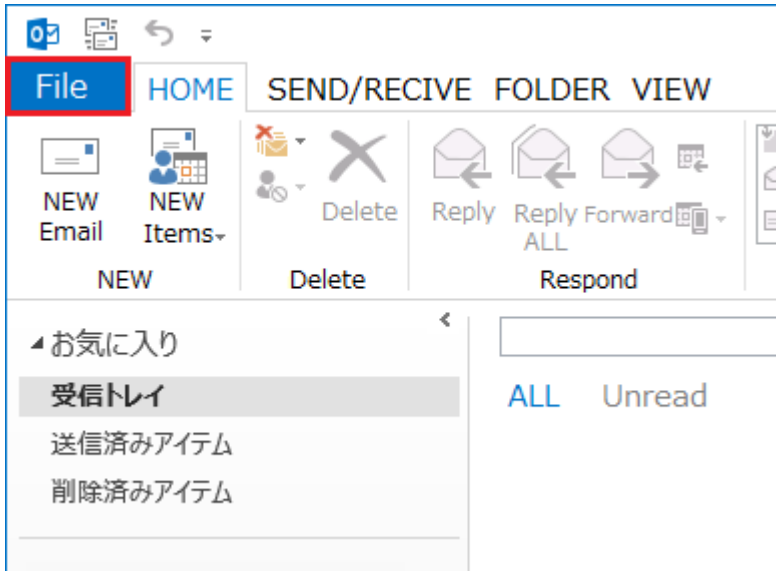




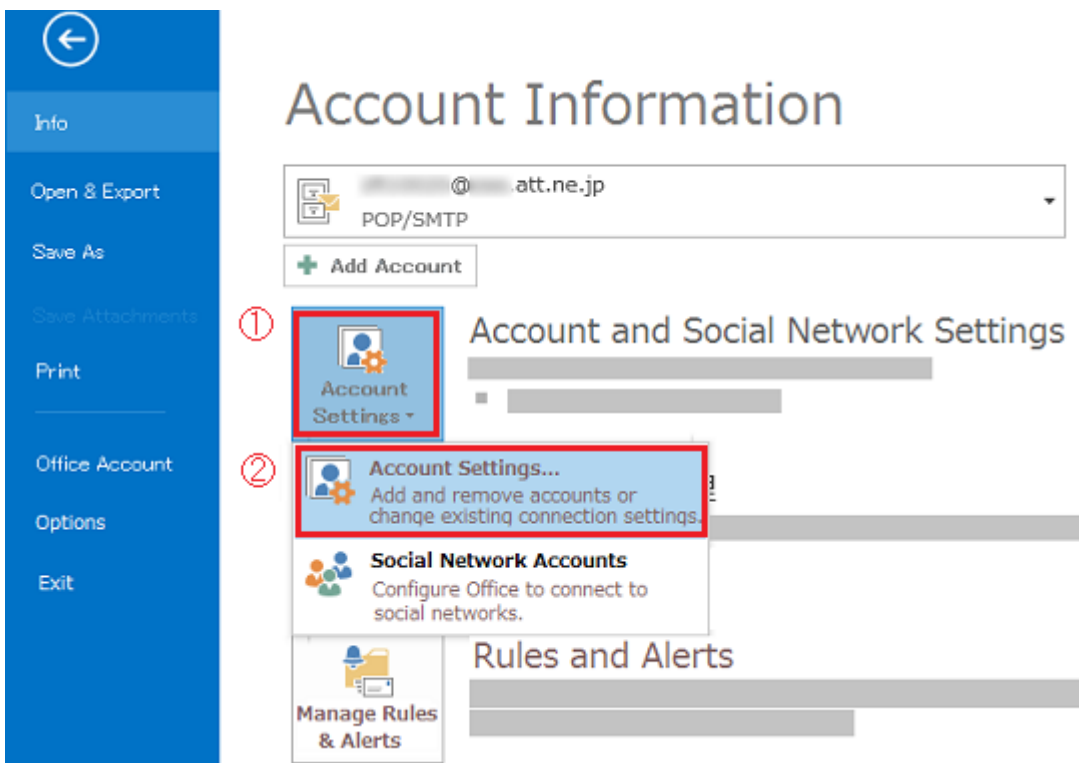
Microsoft Outlook 2013/2010 (Windows)

This manual is written based on “Outlook2013”.

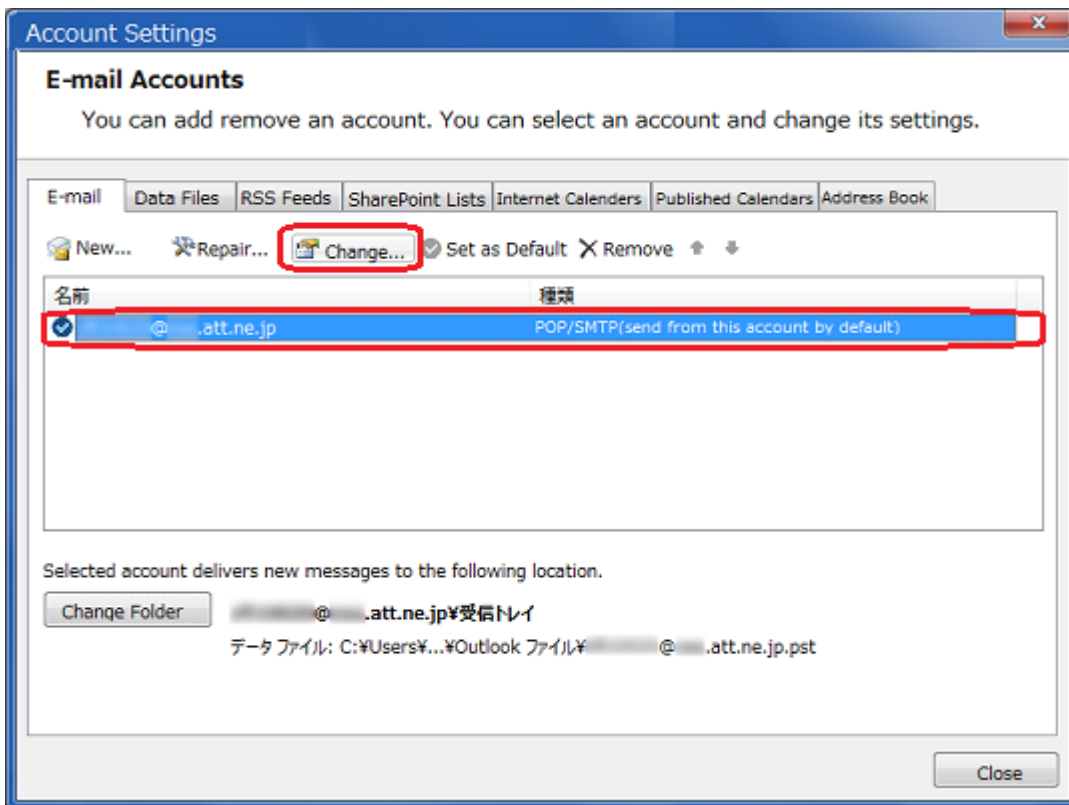
Step1. Click the File tab after Outlook2013/2010 startup.



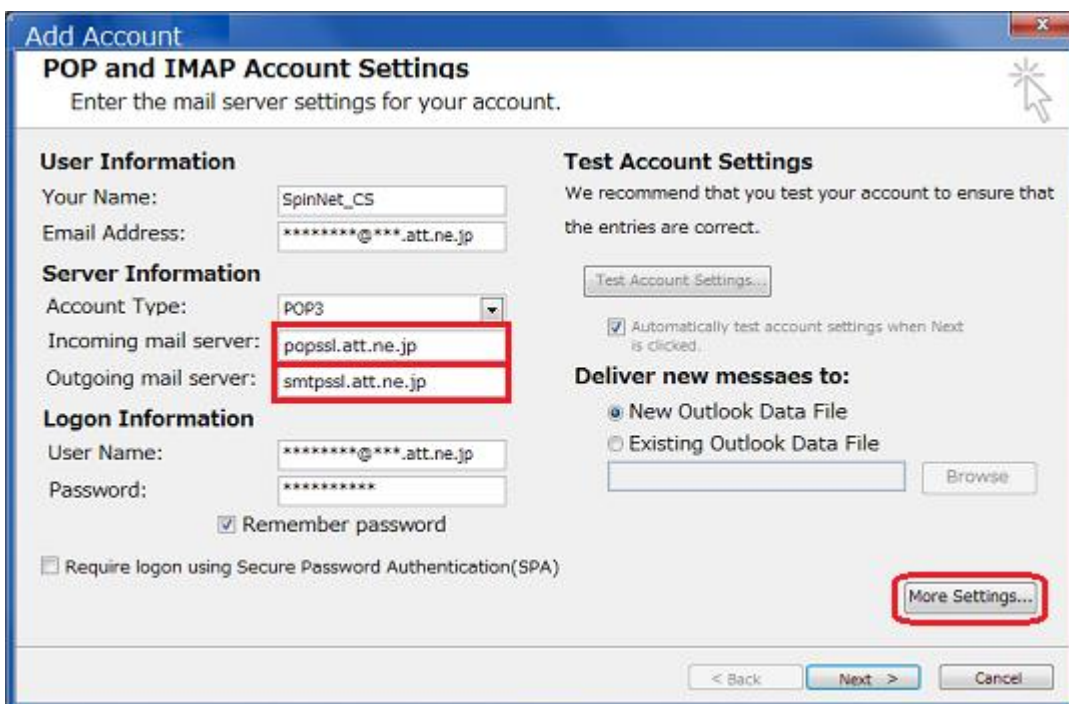
Step2. Choose “Info” and click “Account Settings” then select “Account Settings” from the drop down menu.



Step3. Select the account that you would like to configure, then click “Change”.

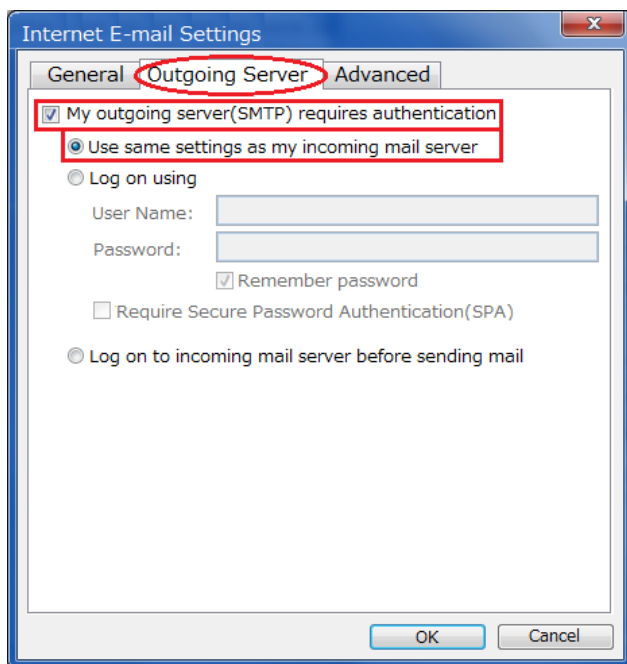


Step4. Enter the following, then click “More Settings”.



Name	Value
Incoming mail server	popssl.att.ne.jp
Outgoing mail server (SMTP)	smtpssl.att.ne.jp

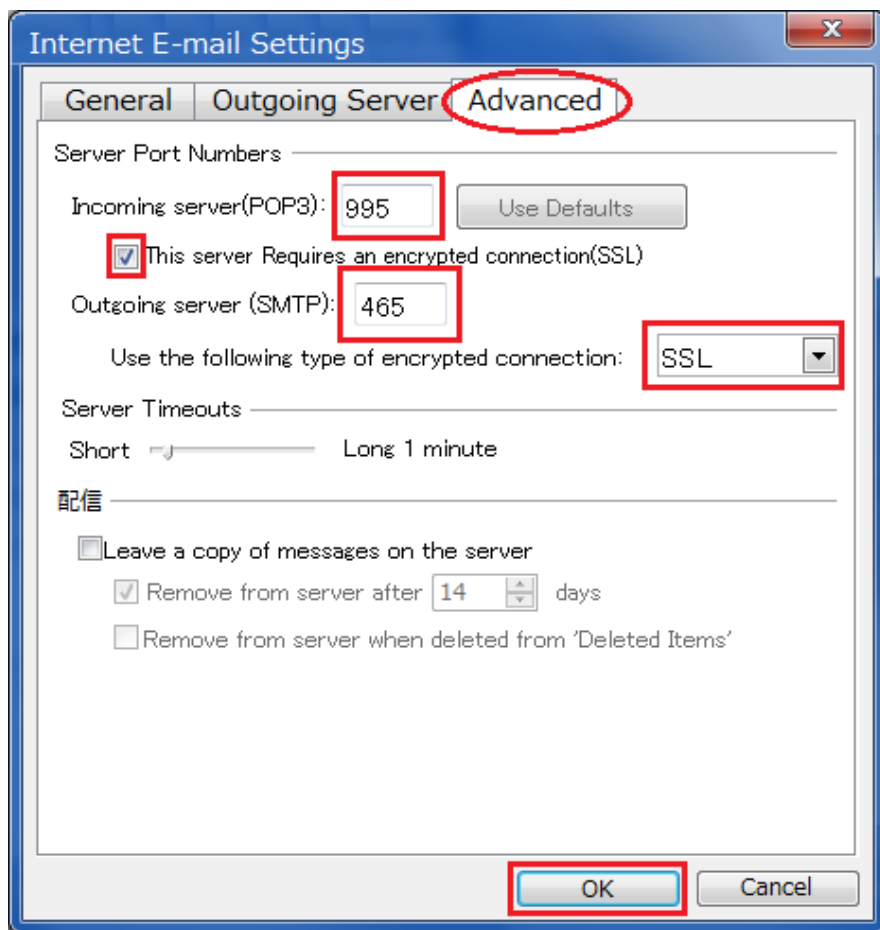
Step5. Click “Outgoing Server” tab and confirm the following information are entered.



Name	Value
My outgoing server (SMTP) requires authentication	Checked
Use same settings as incoming mail server	Checked

Step6. Click “Advanced” tab and Enter the following, then click “OK”.

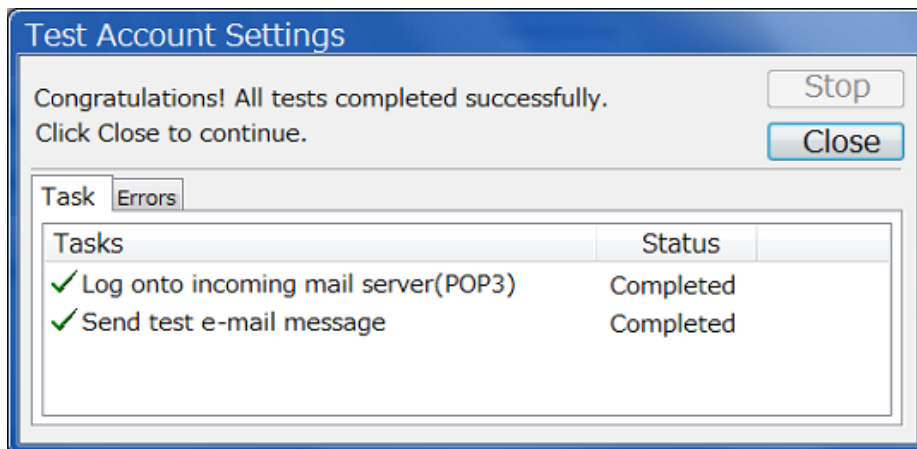
You will go back to Step4 window, then click “Next”.



Name	Value
Incoming server (POP3)	995
This server Requires an encrypted connection(SSL)	Checked
Outgoing server (SMTP)	465
Use the following type of encrypted connection	SSL

Step7.This concludes the setting.

Click “Close”.



Click “Finish”.

