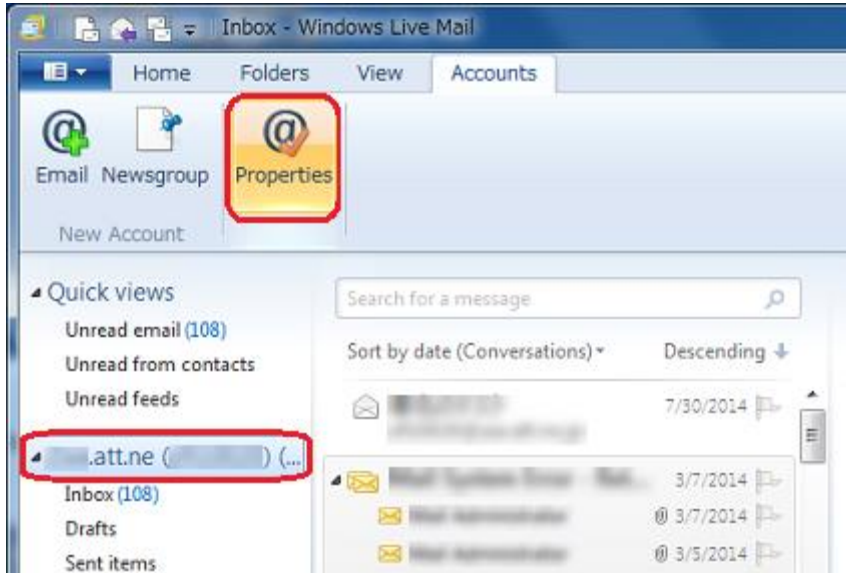


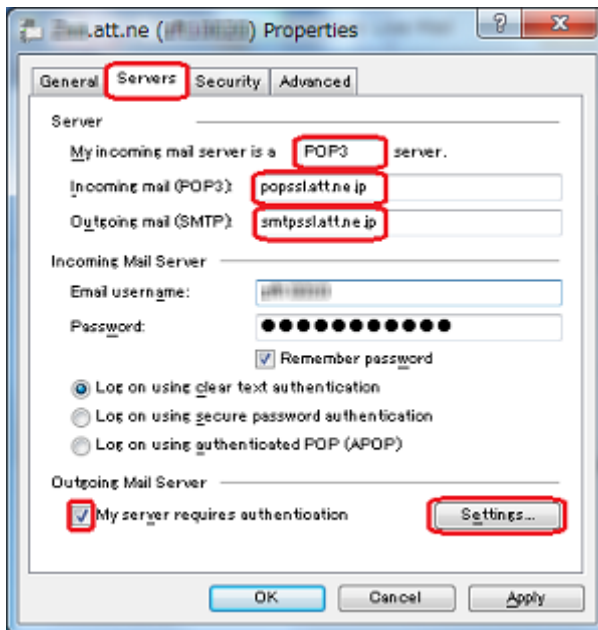


Windows Live Mail (Windows)

Step1. Launch “Windows Live Mail”, click the “Accounts” tab, then select the account that you wish to confirm.

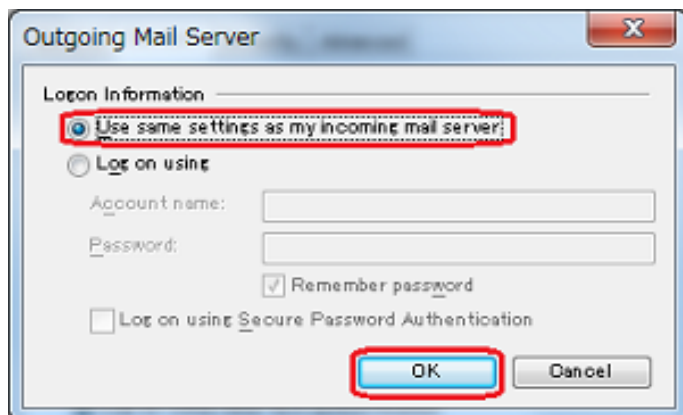


Step2. The email account properties window will appear. Click the “Servers” tab, enter the following. Check “My server requires authentication”, then click “Settings”.

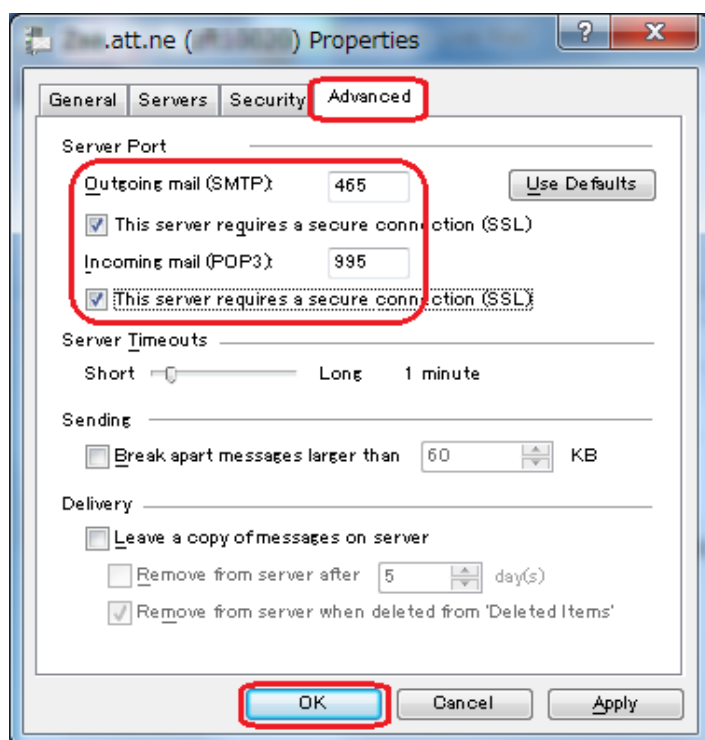


Name	Value
Incoming mail(POP3)	popssl.att.ne.jp
Outgoing mail(SMTP)	smtpssl.att.ne.jp

Step3. The “Outgoing Mail Server” window will appear. Check “Use same settings as my incoming mail server”, then click “OK”.



Step4. You will go back to The email account properties window, click the “Advanced” tab and enter the following. After entering those, click “OK”.



Name	Value
Outgoing mail(SMTP)	465
This server requires a secure connection (SSL)	Checked
Incoming mail(POP3)	995
This server requires a secure connection (SSL)	Checked