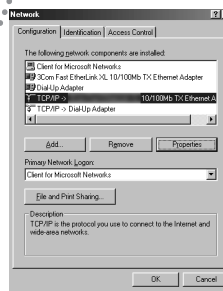


■ TCP/IP Settings

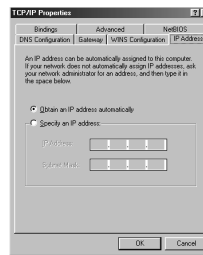
(1) Double-click the “My Computer” icon on your desktop. In the window which opens, double-click the “Control Panel” icon.

(2) Double-click the “Network” icon in the “Control Panel” window to open the “Network” window.

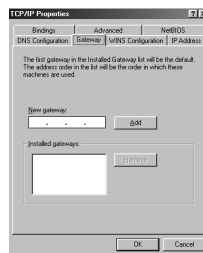
(3) In the “Network” window, there is a section titled “The following network components are installed”. Select “TCP/IP” in this section for the LAN card (Ethernet adapter) you will use, then click the “Properties” button. This will open the “TCP/IP Properties” window.



(4) In the “TCP/IP Properties” window, click the “IP Address” tab. Select “Obtain an IP Address automatically”.

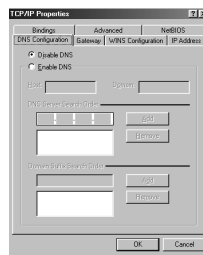


(5) In the “TCP/IP Properties” window, click the “Gateway” tab. Verify that there are no entries in the box titled “Installed Gateways”.



(6) In the “TCP/IP Properties” window, click the “DNS Configuration” tab. Select “Disable DNS” and click the “OK” button.

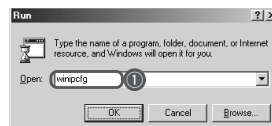
(7) In the dialog box which appears, click “OK” to save your changes and reboot your computer.



■ Checking your IP Address

(1) From the “Start” menu on your desktop, select “Run...” to open the “Run...” window.

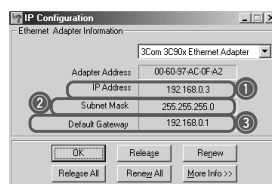
(2) In the “Run” window there is an “Open:” field. Enter “winipcfg” in this field and click the “OK” button to open the “IP Settings” window.



① Enter “winipcfg”

(3) In the “IP Configuration” window there is a section titled “Ethernet Adapter Information”. In this section, select the LAN card (Ethernet adapter) you will use and verify that the settings are as shown on the right.

(4) After verifying the above items, click the “OK” button.



① Verify that the “IP Address” field is set to the address which your router has assigned to it.

② Verify that the “Subnet Mask” field is set to “255.255.255.0”.

③ Verify that the “Default Gateway” field is set to the IP address of your router.