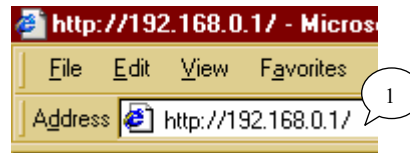


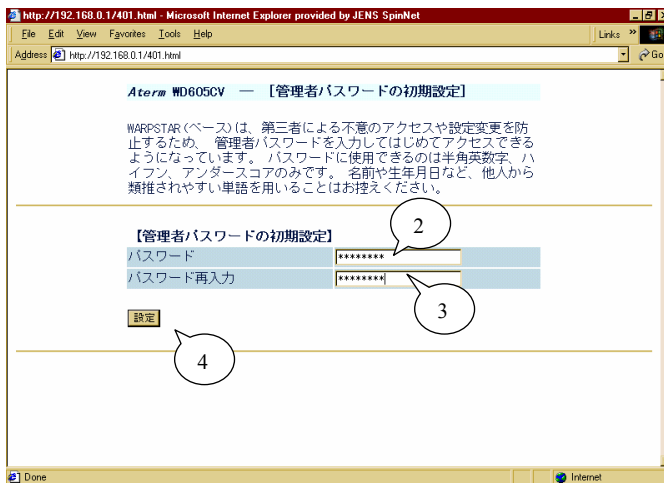
eADSL&SpinPhone Modem (NEC Aterm WD600CV series) Setup Guide

<< When you access the modem for the first time >>

1. Type "http://192.168.0.1/" into the Address field of your browser. This address is the modem's IP address.

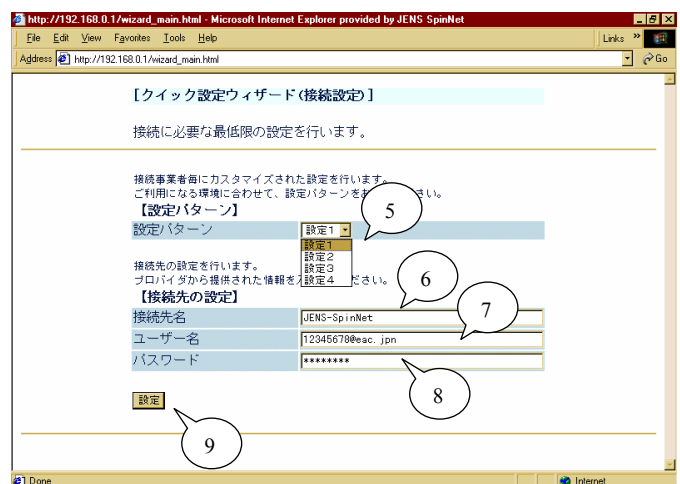


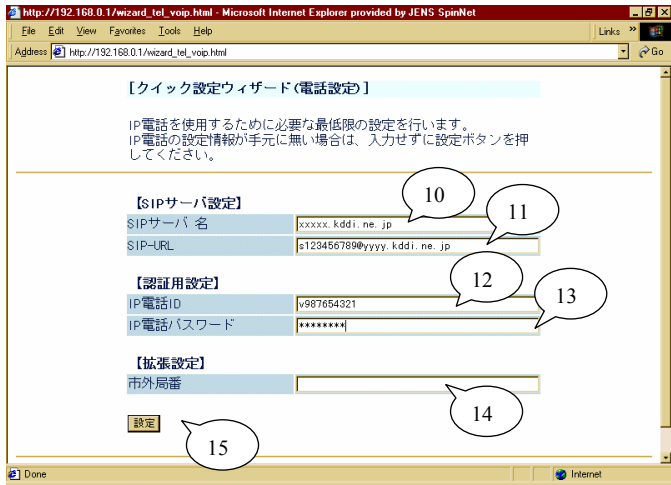
2. Type password for the "admin" user of the modem. (Specify any password which you like and you can easily remember.)
3. Type the same password again to confirm it.
4. Click on the [設定] button.



5. Select the first menu ([設定 1]).
6. Replace to "JENS-SpinNet".
7. Type your eADSL user ID* (12345678@eac.jp).
8. Type your eADSL Password*.
9. Click on the [設定] button.

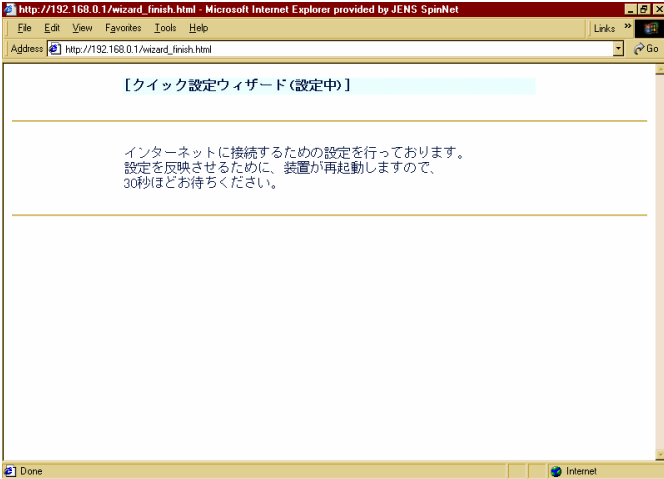
* provided on your "eADSL Access Information" sheet.





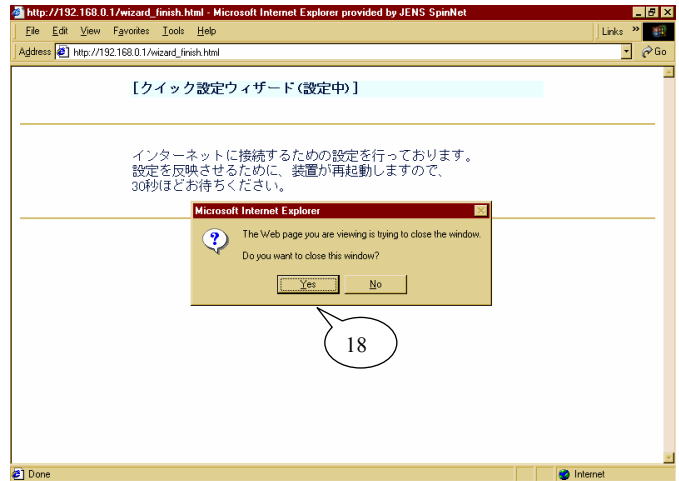
10. Type SIP-Server Name*(xxxxx.kddi.ne.jp).
 11. Type SIP-URL* (s123456789@yyyy.kddi.ne.jp).
 12. Type your SpinPhone Log-in ID* (v987654321).
 13. Type your SpinPhone Log-in Password*.
 14. Leave as blank.
 15. Click on the [設定] button.
- * provided on your "SpinPhone Information" sheet.

16. Wait for about 30 seconds in order to set up the modem. The modem will be restarted automatically and the all lights on the modem flash while restarting.



17. After the modem restarts, this dialog appears. Click on the [OK] button.

18. Click on the [Yes] button to close the browser.



19. Confirm the lights on the modem are as follows;

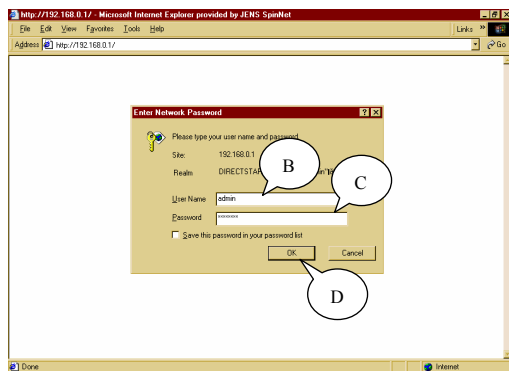
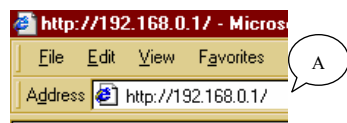
[POWER]: ON (green)
 [ADSL]: ON (green)
 [PPP]: ON (green)
 [DATA]: OFF or Flashing sometimes
 [VoIP]: ON (green)

You have completed the modem setting.
 Access the internet through your PC using a browser or mail client software, or place a SpinPhone call.

Additional Information

<< When you need to change or confirm the modem setting >>

A. Type "http://192.168.0.1/" into the Address field of your browser.



B. Type "admin".
 C. Type the password for the "admin" user of the modem, which you set when you accessed it for the first time.
 D. Click on the [OK] button.