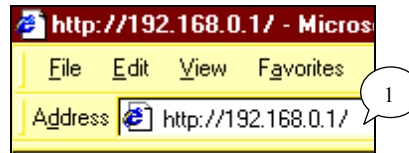


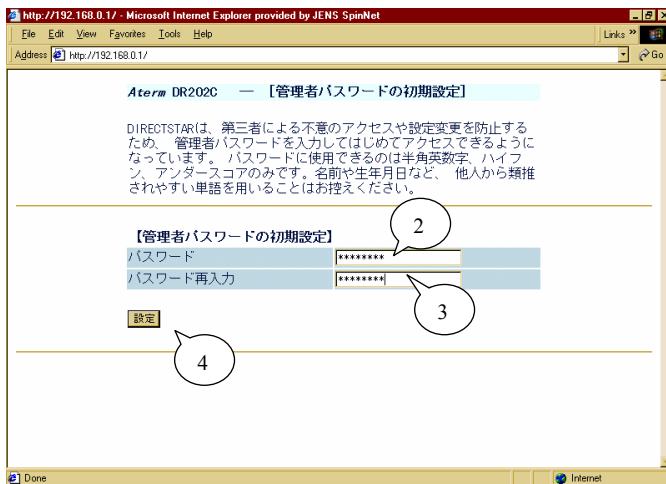
eADSL Modem (NEC Aterm DR200C series) Setup Guide

<< When you access the modem for the first time >>

1. Please type "http://192.168.0.1" into the Address field of your browsers. This address is the modem's IP address.

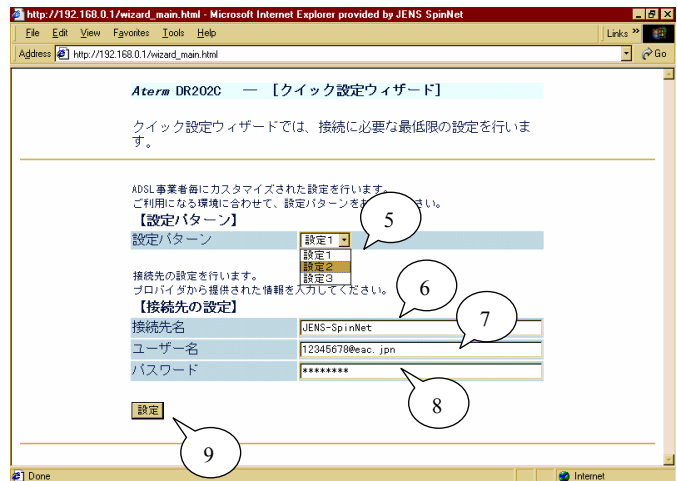


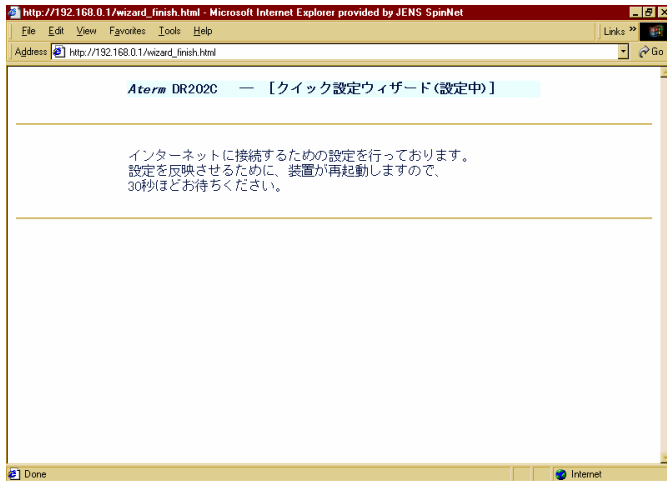
2. Type password for the "admin" user of the modem. (Specify any password which you like and you can easily remember.)
3. Type the same password again to confirm it.
4. Click on the [設定] button.



5. Select the second menu ([設定 2]).
6. Replace to "JENS-SpinNet".
7. Type your eADSL user ID* (xxxxxxx@eac.jp).
8. Type your eADSL Password*.
9. Click on the [設定] button.

* provided on your "Access Setup Information" sheet.





10. Wait for about 30 seconds in order to set up the modem. The modem will be restarted automatically and the all lights on the modem flashes while restarting.

11. After the modem restarts, this dialog appears. Click on the [OK] button.



12. Click on the [Yes] button to close the browser.

13. Confirm the lights on the modem as follows:

- [LINE]: ON
- [PPP]: ON
- [LAN]: ON
- [DATA]: OFF or Flashing sometimes
- [POWER]: ON

You have completed the modem setting.
Access to the internet through your PC using a browser or mail client software.